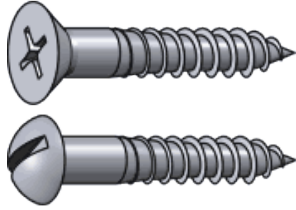


# Fastener Type Chart

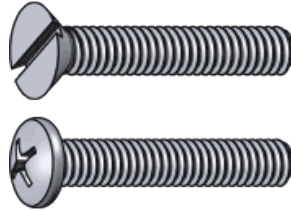
www.boltdepot.com/tools

## Fastener Categories



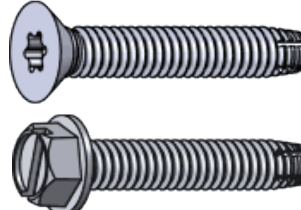
### Wood Screws

Screws with a smooth shank and tapered point for use in wood. Abbreviated WS



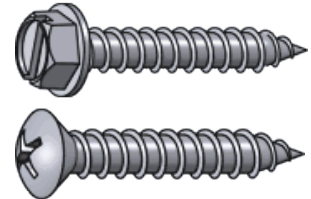
### Machine Screws

Screws with threads for use with a nut or tapped hole. Abbreviated MS



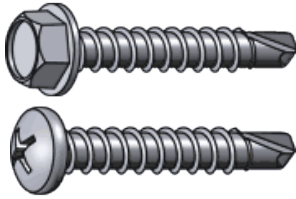
### Thread Cutting Machine Screws

Machine screws with a thread cutting (self tapping) point.



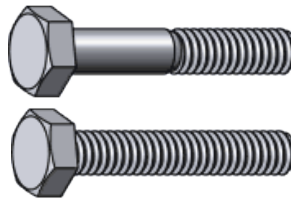
### Sheet Metal Screws

Fully threaded screws with a point for use in sheet metal. Abbreviated SMS



### Self Drilling SMS

A sheet metal screw with a self drilling point.



### Hex Bolts

Bolts with a hexagonal head with threads for use with a nut or tapped hole. Abbreviated HHMB or HXBT.



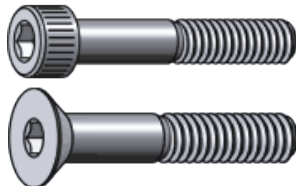
### Carriage Bolts

Bolts with a smooth rounded head that has a small square section underneath.



### Lag Bolts

Bolts with a wood thread and pointed tip. Abbreviated Lag.



### Socket Screws

Socket screws, also known as Allen Head, are fastened with a hex Allen wrench.



### Set Screws

Machine screws with no head for screwing all the way into threaded holes.



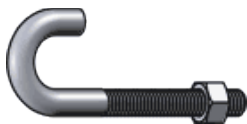
### Eye Bolts

A bolt with a circular ring on the head end. Used for attaching a rope or chain.



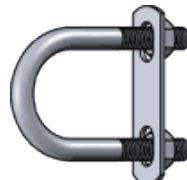
### Eye Lags

Similar to an eye bolt but with wood threads instead of machine thread.



### J-Bolts

J shaped bolts are used for tie-downs or as an open eye bolt.



### U-Bolts

Bolts in U shape for attaching to pipe or other round surfaces. Also available with a square bend.



### Shoulder Bolts

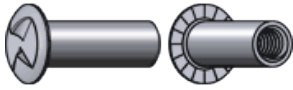
Shoulder bolts (also known as stripper bolts) are used to create a pivot point.



### Elevator Bolts

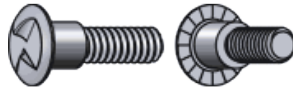
Elevator bolts are often used in conveyor systems. They have a large, flat head.

## Fastener Categories *(continued)*



### Sex Bolts

Sex bolts (a.k.a. barrel nuts or Chicago bolts) have a female thread and are used for through bolting applications where a head is desired on both sides of the joint.



### Mating Screws

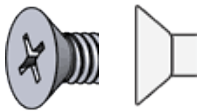
Mating screws have a shoulder that matches the diameter of the sex bolts they are used with.



### Hanger Bolts

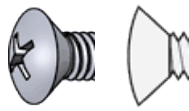
Hanger bolts have wood thread on one end and machine thread on the other end.

## Head Styles



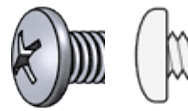
### Flat

A countersunk head with a flat top.  
Abbreviated FH



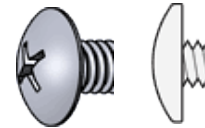
### Oval

A countersunk head with a rounded top.  
Abbreviated OH or OV



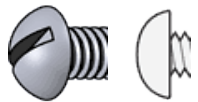
### Pan

A slightly rounded head with short vertical sides.  
Abbreviated PN



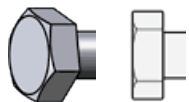
### Truss

An extra wide head with a rounded top.



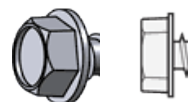
### Round

A domed head.  
Abbreviated RH



### Hex

A hexagonal head  
Abbreviated HH or HX



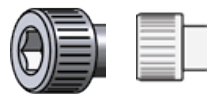
### Hex Washer

A hex head with built in washer.



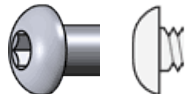
### Slotted Hex Washer

A hex head with built in washer and a slot.



### Socket Cap

A small cylindrical head using a socket drive.



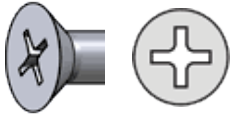
### Button

A low-profile rounded head using a socket drive.

# Fastener Type Chart

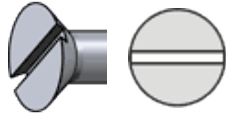
www.boltdepot.com/tools

## Drive Types



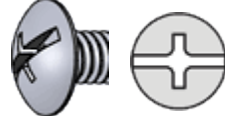
### Phillips and Frearson

An X-shaped drive.  
Abbreviated PH



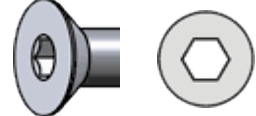
### Slotted

A slot in the head.  
Abbreviated SL



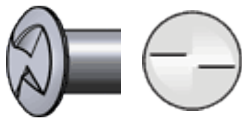
### Combination

A combination of slotted and  
Phillips drives.  
Abbreviated combo



### Socket, Hex or Allen

A hexagonal hole for use with  
an Allen wrench.



### One Way

Installs with a normal slotted  
driver but can not be removed  
without special tools.



### Square

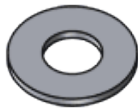
Also known as Robertson drive.  
Abbreviated SQ or SD.



### Torx

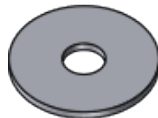
A six-pointed star pattern,  
specifically designed to  
prevent cam-out and stripped  
heads.

## Washer Types



### Flat

A flat washer, used to distribute  
load. Available in SAE, USS and  
other patterns.



### Fender

An oversize flat washer used to  
further distribute load  
especially on soft materials.



### Finishing

A washer used to obtain a  
'finished' look. Usually used  
with oval head screws.



### Split Lock

The most common style of  
washer used to prevent nuts  
and bolts from backing out.



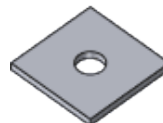
### External Tooth Lock

A washer with external 'teeth'.  
Used to prevent nuts and bolts  
from backing out.



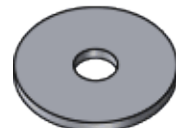
### Internal Tooth Lock

A washer with internal 'teeth'.  
Used to prevent nuts and bolts  
from backing out.



### Square

A square shaped washer.



### Dock

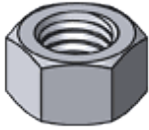
Dock washers have a larger  
outside diameter and are  
thicker than standard.



### Ogee

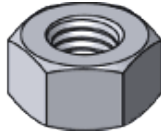
Thick, large diameter, cast iron  
washers with a curved or  
sculpted appearance. Typically  
used in dock and wood  
construction.

## Nut Types



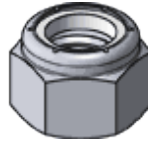
### Hex

A six sided nut. Also referred to as a Finished Hex Nut.



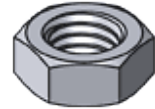
### Heavy Hex

A heavier pattern version of a standard hex nut.



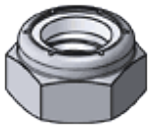
### Nylon Insert Lock

A nut with a nylon insert to prevent backing off. Also referred to as a Nylock.



### Jam

A hex nut with a reduced height.



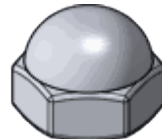
### Nylon Insert Jam Lock

A nylock nut with a reduced height.



### Wing

A nut with 'wings' for hand tightening.



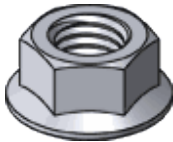
### Cap

A nut with a domed top over the end of the fastener.



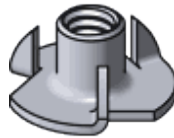
### Acorn

Acorn nuts are a high crown type of cap nut, used for appearance.



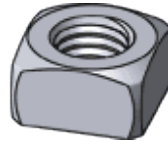
### Flange

A nut with a built in washer like flange.



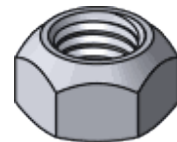
### Tee

A nut designed to be driven into wood to create a threaded hole.



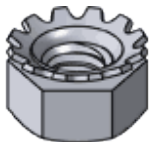
### Square

A four sided nut.



### Prevailing Torque Lock

A non-reversible lock nut used for high temperature applications.



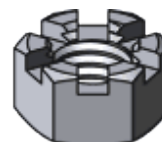
### K-Lock or Kep

A nut with an attached free-spinning external tooth lock washer.



### Coupling

Coupling nuts are long nuts used to connect pieces of threaded rod or other male fasteners.



### Slotted

Slotted nuts are used in conjunction with a cotter pin on drilled shank fasteners to prevent loosening.



### Castle

Castle nuts are used in conjunction with a cotter pin on drilled shank fasteners to prevent loosening.